

PARISH PROFILES FOR THE BENEFICE OF KIRKOSWALD, LAZONBY, GREAT SALKELD AND RENWICK WITH CROGLIN

1 ST OSWALD'S, KIRKOSWALD TOGETHER WITH THE VICARAGE AND SCHOOL



This is an ancient and beautiful parish, an exceptional place in an exceptional county.

The building itself, with its Romanesque arches and lambent East window, immediately strikes any visitor as dignified and historical, conveying centuries of Christian community. The Parochial Church Council is [actively] discussing plans for a kitchen and a toilet, to bring the building into the twenty-first century and to make socialising after services that much easier.

It has a vibrant and active congregation [electoral roll: c.45], buzzing with interesting and intelligent

people of all classes and all ages, albeit with the usual lean towards the retired and “getting-on-a-bit”, with support from all round the village, and the assistance of a group of ladies full of ideas for raising money to supplement the well-established rota of regular giving. And a very capable organist, when she is at home from Somalia, Ethiopia, etc. Not surprisingly the church is very popular for weddings, funerals, and christenings. As a result the parish is financially sound, well insured, and looking outward, its accounts supervised by a qualified accountant.

The village has a Church of England school, which makes use of the church for lessons, visits and displays, and there was regular contact from our last vicar in weekly visits to the school, which need to be maintained. The village also has a village hall/ Church Institute, which can be, and frequently is, used for social activities.

Outside and surrounding the church is a particularly beautiful churchyard, with some magnificent headstones going back to the eighteenth century, and with more modern ones, which are carefully and frequently tended by members of long-standing village families. It is a recreational area, which is also serving a therapeutic purpose for the bereaved.

Kirkoswald Population 716



The village is a convenient and satisfying place in which to live, with its church, excellent surgery, two thriving pubs in the centre of the village serving fine food, and Ravenbridge Stores, the local shop staffed by volunteers with Outreach Post Office - a friendly meeting place to enjoy coffee and cakes. There is regular contact with the outside world through the twice-weekly Fellrunner bus service, and connections to the capital via the Settle-Carlisle train service to Leeds. You are well able to be sitting in the British Library consulting an irreplaceable book within five hours from leaving home.

And it is possible to live in this village and look out at the rolling hills of the Eden valley, watch the C130's

slowly flying over the River Eden, gaze at the handsome oak trees, which have been growing here for two hundred years and more, and still get out to concerts and plays at the Rhegedcentre in Penrith or more urban venues in Carlisle.

Our Commitment is to a historical Christianity, which seeks to get on with and share with all other sects and varieties of religious experience, and still has a place for a good and well-used collection of Books of Common Prayer, which also seeks to modernise and work out an answer to a secular and increasingly God-less society, which has concerns for the old and not-so-well-off, for in-comers, and, from a well-rooted base, for all the many problems of a rootless society.

SUPPLEMENTARY INFORMATION

ATTENDANCE:

Sunday Mornings – 15/25; Easter Sunday – 56; Christmas Day – 54

FINANCE – YEAR TO 31.12.2016

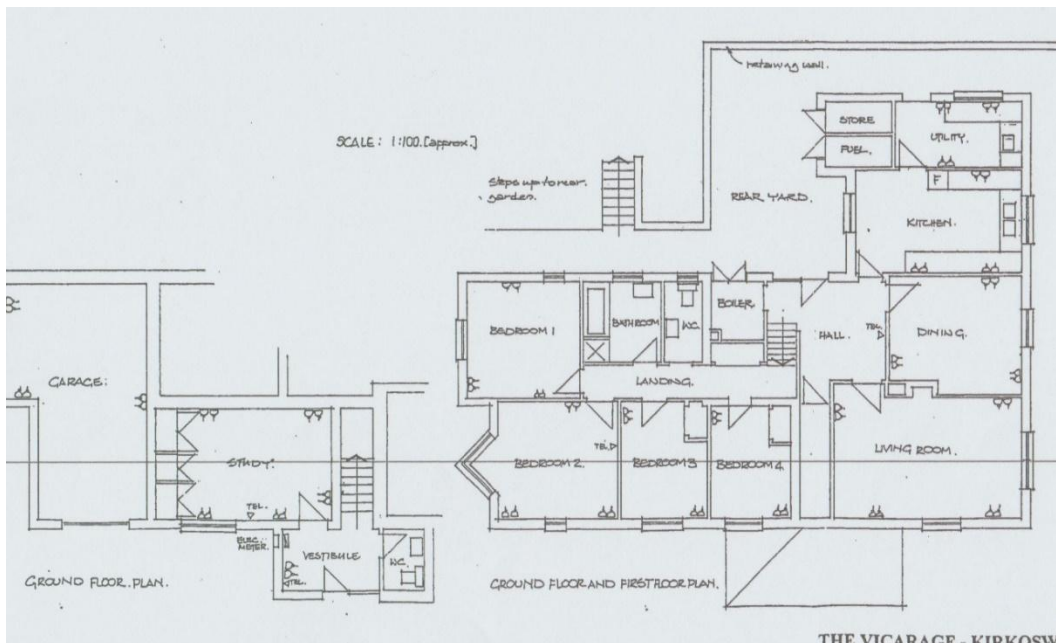
Income £43,142 (including Collections and Donations £9,284) & Legacies (specific) £16,000

Expenditure: £30,365 (including Parish Share)

THE VICARAGE

The Vicarage was purpose built in the late 1980s for David our last vicar and benefits from a large garden with open views across fields to one side. It is positioned in a quiet cul de sac off the village square and only a short distance from the Staffield Cricket Club field. It will be suitably upgraded for the new incumbent in the very near future.

All in all a very pleasant place to live.



KIRKOSWALD SCHOOL

Kirkoswald CE School is a small school in the Eden Valley with 87 children on roll. We operate three mixed age classes and have a warm, family atmosphere. We serve the villages of Kirkoswald and Renwick and the outlying farming community and we also have several children who join us from out of catchment.

We approach the curriculum from a whole school, topic based approach and want to engender a love of learning for all. With this in mind we do a lot of our learning outside in our special classroom, a parachute canopy, up the common in KO. We have recently been awarded the Green Flag, Eco Schools Award and we are proud of the fact that we are an accredited Adventure Learning School.

Our children are placed in 'Crews' on entry to school and these are, the Curlews, the Oystercatchers and the Lapwings and our behaviour management system is one of positive reinforcement and reward, using the crews. Our music concerts have become notorious in the local area and we are often singing with our singing teacher Gill, who doubles up as our School Business Manager.

Our school motto is, Explore, Dream, Discover and you can find out more about us from our school website, <http://kirkoswald.cumbria.sch.uk/> where there are lots of photos of the things we do.

2 St NICHOLAS, LAZONBY



Introduction

- Lazonby is a pleasant village in the Eden Valley, within Eden District, 7 miles from Penrith.
- Good communications **via** the M6 and West Coast main railway line and its own station on the Settle Carlisle line; regular volunteer run bus service
- Varied community, population 961 at last estimate and rising with some recent new development; local Co-op store, Post Office, cash point and large craft bakery; a number of local societies and village hall; thriving church school
- Church of St. Nicholas has electoral roll of 62; regular Sunday service attendance of c.20; there are several regular activities especially T-Break for young children (20 -30) with parents
- The parish is one of four parishes in the Eden Bridge Benefice and is linked with the neighbouring Cross Fell Benefice and the local Methodist Circuit in the East of Eden Mission Community
- The Church Building is in a good state of repair; the parish finances are in good order; the PCC members are active and several volunteers contribute to worship and other aspects of church life

The Place

- Lazonby is set on the side of a hill running towards the river Eden with views of the Pennines. Good road connections in all directions to Penrith and M6 – 7 miles, Carlisle 18 miles and South East towards the A66. Manchester and Leeds accessible by road and train.
- The village is a mixed community ranging from elderly retired through farming and other locally employed workers together with commuters including a significant number of younger working parents with school age children. It is a good place for a young family to grow up, with a good number of children and young people in the villages of Kirkoswald and Lazonby. There are good local C of E schools in both villages, and good secondary schools in Penrith. Outdoor activities are easily accessible in the Eden Valley, and the Lake District. Next to the school is a play park and heated outdoor swimming pool. There seems to be an active local economy, with a good range of potential jobs available for working spouses, especially in Penrith and Carlisle.
- There is full information about the village and plans for the future on the Parish Council website especially the pages relating to the draft neighbourhood plan:
<http://www.lazonbyparishcouncil.org/Oldsite/Neighbourhood%20Plan.html>
- The Church, the School and the Village Hall all date from the mid 19th century built by the then owners of Lazonby Hall and Estate. The church is “neo-gothic” designed by Anthony Salvin replacing a medieval building of which little is known. It can seat up to 150. It has benefited from recent alterations to provide a disabled toilet, servery and flexible use areas. It is in good state of repair as is the churchyard.
- Until the recent departure of the incumbent, the regular monthly service pattern was 1st Sunday – lay led morning worship, Holy Communion services on other Sundays with the last in the month being a benefice service circulating round the four parishes in the group. Currently there are fewer Communion services with service plans co-ordinated within the benefice and the East of Eden Mission community. The style of worship is fairly traditional for Communion services, rather more informal for the lay led services.
- The church has a well maintained two manual organ and an electronic piano. Organists are hard to come by and music is provided via CDs and mp3 files. The installed sound system is effective. There is an audio loop.

The People

- As well as the usual PCC officers, there is one retired priest in the village who is available to take occasional services together with baptisms, weddings and funerals. There are three people who are trained and registered to lead services. Volunteers provide cleaning and flower decorations and assist as readers, intercessors and chalice servers. There is a team of bell ringers. The churchyard is maintained with payment for a part time person from the proceeds of an invested designated fund together with volunteer help.
- An active group, T-Break, a regular fortnightly event during school term time for young mostly primary school age children and their parents. Led by volunteer members of the congregation this group reaches some 20 families within the community.
- The PCC through its nominations has an active interest in the School governing body.
- The PCC has always paid its Parish Share in full; has managed to keep its finances in balance and by dint of securing grants and fund raising events has completed programmes of major repairs and improvements. The turnover aside from special items in 2016 was about £30,000. About £100,000 is invested with CBF.

- There are occasional shared services with Methodists. The neighbouring benefice of the Cross Fell group is joining with this benefice along with the Methodist circuit in the East of Eden Mission Community. The future is full of opportunity and challenge.

Policies

- Policies are in place for Safeguarding, Health and Safety and Fire Risk.
- There is an open policy related to baptisms, confirmation and marriage. Preparation has been left in the hands of the clergy.
- Parish Mission Action Plan – A plan was prepared some years ago but is now in effect superseded by the current Mission Community Development.

Work

- Foundations: Alpha Course, Cafe-Church, SHAPE course for Benefice.
- Opportunities: Families and children and links with school; welcome of newcomers to village.
- Schools :Lazonby Church of England School, which is a member of the Good Shepherd Multi Academy Trust, is visited by 5 members of the congregation on a weekly basis. The previous Vicar was an active member of the Governing Body and led collective worship most weeks. The school uses the Church for regular seasonal services and educational visits.
- Elderly: a few home communions; monthly service in Eden Court.
- Prayer Groups: Bible study: Monthly Food for Thought group, fortnightly Local House of Prayer; weekly blessing of neighbourhood.
- Church organisations: Fortnightly T-Break
- Other aspects: Involvement of congregation in local community eg. Neighbourhood planning group; WI; local history society; Fun tots. Team of people leading Sunday services.
- Problems/Issues: Elderly main Sunday congregation with two generations missing.
- Hopes and aspirations : Building up T-Break into a new congregation. Strengthening links with the school. More frequent Cafe-Church services; extending fellowship groups. More lay training. Closer links within the benefice.

Supplementary Information

Service summary (From 2016 Statistics for Mission Return)

Usual Sunday attendance 20

Easter attendance 33(communicants 28)

Christmas services 214 (communicants 32)

There were: 1 baptism, 8 funerals in church, 1 funeral at a crematorium. There were no marriages.

Accounts summary (Figures taken from annual return to diocese)

2016 Income:

Giving including gift aid recovered:	£27335
Fundraising	£1708
Interest	£3348

Fees retained	£3571
Other income	£11602
(includes transfer from investments, insurance claim payment and VAT recovery)	
Total	£47564

2016 Expenditure:

Fund raising costs	£247
Parish share	£17200
Mission giving	£2711
Expenses and honoraria	£3515
Church expenses	£4813
Major repairs	£15950
Other	£1406
Total	£45842

Balance and investments (31/12/2016)

Current bank and cash balance	£14859
Investments	£104519

3 St CUTHBERT'S, GREAT SALKELD



Introduction

- Our church is in the heart of the village in beautiful surroundings.
- We serve the local community, with strong links to other parishes in the Benefice including our Methodist friends in Great Salkeld
- We have a small but active PCC who put time and effort into the work of our Church.

Background:

Our Grade II* listed Church, originally dating from 880, stands in a very prominent position in the centre of the village, on the western slopes of the Eden Valley, standing beside the only road passing through the village between the A686 Alston to Penrith road and the village of Lazonby.

Being on a through route the Church receives a considerable number of visitors, especially as St Cuthbert's is an 'open church' (24 hours a day). The Church plays a significant part in the life of this lively village and stands as an active witness of Christian faith within this close knit community of Great Salkeld and surrounding villages. The most recent population estimate was 408 inhabitants.

Standing in a very tidy churchyard, which is still an open burial ground, this well maintained church is in use most Sundays by an average sized congregation of 12-16, attending either Holy Communion or Parish led services, mainly at 10.00 followed by refreshments and fellowship.

We have one Churchwarden, and 8 on the PCC. Three of our PCC regularly take Parish led services. We also have many who will contribute as Readers or with Intercessions. Our Electoral Roll stands at 43. Our income is derived partly from regular giving and partly from fund raising activities where we aim to provide fun/enjoyable events that we see as good value for money and church outreach. We make a high parish offer of £10,000, given the small size of the village, which we have maintained for the last 3 years.

There is a Bible Study Group (Food for Thought) held in the village and during the year other activities such as Café Church and Mother's Day service will be held in the village hall.

Baptism has always been "Open" to all who have come forward. Preparation for marriage has been the task of the Clergy; divorced people have been married in Church and are made welcome. We have in the past had a woman as Vicar, which supports the PCC stance on the appointment of women clergy. We have also committed ourselves to the principle of a Cumbria wide ecumenical Covenanted Partnership in an Extended Area.

Challenges and Opportunities:

We are an aging/elderly congregation. We struggle to attract young families to church, nevertheless we do try different venues and types of service, and encourage and welcome all who join us.

Our church building is well maintained, but given its age, this is an on-going and costly task. We are in the process of submitting a faculty to install a toilet in the churchyard, which will benefit both the congregation, village and visitors to the church or passing through the village; in addition we plan to reorder the back of the church to have a small kitchenette and fellowship area, as we believe both projects will enable and encourage people to join us.

Whilst we are a small PCC, who like the congregation are getting elderly, we continue to work hard to maintain our church and raise the funds needed, but each year congregation/congregation giving drops and the organisation of fundraising falls on fewer people, which makes this task more challenging each year, nevertheless we continue to do so, as we are very aware of the need to fund both the church and clergy costs.

Some key 'aims':

- Build on successful forms of worship such as family services and Café Church
- A vibrant church community which supports those with physical, emotional and spiritual needs.
- Develop more opportunities for engaging young families and children in spiritual awareness and growth.
- Link with Toddler Group /Play Group held in the Village Hall.
- Develop the skills to carry out emotional and spiritual support of the elderly at home.
- Increase opportunities for the spiritual growth of the congregation.
- Work with other clergy in the wider Mission Area.

- Explore ways of providing spiritual experiences for visitors to the area.
- Build on a church community that is willing to be flexible, progressive and inclusive while recognising past traditions
- Explore the opportunity for all churches in the Benefice to cooperate and work together through a 'single PCC, to develop a greater spiritual presence in the area.

Supplementary Information

Financial Summary 2016

Income £14,176
 Expenditure £19,956
 Surplus/(Deficit) (£5,780)
 Bank Accounts £18,386
 Investments £60,616
 Total Net Assets £81,502

Occasional Offices - Average per year

Baptisms 3
 Weddings 2
 Funerals 5

4 ALL SAINTS RENWICK, WITH CROGLIN



Summary

- Our church is a small, friendly, welcoming place in beautiful surroundings.
- We see our work very much as serving the local community, who, in turn, are supportive of our work.
- We have strong links to the other parishes in the Benefice despite being the most isolated.
- All Saints has a long history of ecumenical co-operation with our Methodist friends in Renwick – so the development of an Ecumenical Mission Community has been seen as a natural development for us.
- We have an active PCC with many talented people prepared to put time and effort into the work of the Church.

Renwick and Croglin are two small working villages nestling in the foothills of the Pennines in an Area of Outstanding Natural Beauty; the combined population at the last estimate was 278.

There is a strong farming community based in the villages; residents also travel to work in Penrith, Brampton or Carlisle.

All Saints Church in Renwick stands within its own churchyard, well back from the road to Croglin at the northern edge of the village. It is probably the fourth on the site, being rebuilt in 1845 of local red sandstone with a slate roof. It is impressive in its simplicity, well maintained with the help of local craftsmen and our own congregation. The building is not listed.

The church in Croglin was closed in 2012 when the parish was amalgamated with Renwick. The graveyard in Croglin is still open and therefore remains the responsibility of the PCC.

Services have been mainly traditional with 9am Holy Communion and 5pm Evening Prayer with shortened Communion. Renwick shares with the other three Churches in hosting a monthly Benefice service. We are fortunate in having a husband and wife team who provide us with organ or keyboard music for most services – we also sing with gusto unaccompanied when the need arises! If an ordained minister cannot be present then the two churchwardens are prepared to lead a service of either Morning Worship or Evening Prayer, when other members of the congregation will contribute with Intercessions or a Reflection.

With a Methodist Chapel a short distance from All Saints there has been a long history of working together with our friends there, including for events such as Christian Aid Week.

Two of our congregation have been trained and commissioned by the Diocese to do pastoral visiting; one member of the congregation felt called to Lay Ministry recently but disappointingly the course was cancelled as there were not enough other people prepared to commit to it.

The electoral Roll stands at 36 of whom 10 are regular worshippers and a further 10 are occasional worshippers. The average attendance at services for the last five years has been 10 or 11. The congregation is mostly elderly but occasionally boosted by local children and their parents. Income is partly from congregational giving and partly from our very active fund-raising activities, some of which we consider as an outreach to the two villages. We have been able to maintain our parish offer or increase it in line with Diocesan clergy costs; our Offer for 2018 is £6966 and this will be by far our largest expense item.

Baptism has historically been “Open” to all who have come forward; preparation for marriage has been the task of the Clergy; divorced people have been married in Renwick and are made welcome. The PCC supports the appointment of women clergy. We have also committed ourselves to the principle of a Cumbria wide ecumenical Covenanted Partnership in an Extended Area.

The PCC has given support to a North Pennines AONB project for Lottery funding to boost tourism along the Fellside. We have just heard that initial funding has been awarded to develop this into a fully fledged project. What we would like to do is re-order the rear of the church to make it more user friendly for residents and tourists, thereby attracting more people in to Church. Such a project will certainly need additional capital grants.

Being a small parish within the Benefice and without a school, the opportunities for mission and growth are limited. We do, however, hold many fund-raising events which are often well supported by the village and create a lot of goodwill. (Seeing our former vicar and the two Churchwardens take part in a fashion show was great fun!) Every second year there is a Flower Festival which draws many people in to Church both to help with the organisation and to come as visitors. We are very fortunate in having a local couple prepared to open their home to host special events.

Within Renwick there are many clubs and organisations with Church members taking an active role, including Three R’s, a philosophy/discussion group where the opportunity arises from time to time to challenge other members with the Christian view.

Within the Benefice are a number of faith based activities including Food for Thought House Groups and Cafe Church, organised on an ecumenical basis and supported by Renwick people.

We recently installed a prayer box at the rear of church which everyone is encouraged to use – we also can take it to our events where it is available for use. The Prayer requests are then read out at the next service.

Hospitality is an important part of our church life with refreshments being served after Benefice services, concerts and other special events; during the summer, we provide afternoon teas for passing tourists as well as for friends in the village.

Supplementary Data

The following attendance data has been averaged over the five years 2012-2016

Weekly attendance on Sunday is **10** or **11**, whether at 9am or 5pm

Easter attendance – **33**

Christmas attendance – including Christingle on Christmas Eve – **59**

Note: The total population of the parish at the last estimate was 278

Baptisms – sometimes none in a year, **2** at most in 2015

Weddings – sometimes none in a year, sometimes **1**

Funerals – at most **2** in a year

Parish Offer	2013	2014	2015	2016	2017
	£6335	£6481	£6643	£6643	£6789

Accounts Summary for 2015 and 2016

	2016	2015
Income		
Giving	£5447	£3494
Gift Aid refunds	£1516	£---
Fees	£1026	£ 279
Fund Raising	£5294	£4207
Grants	£ 525	£ 525
Interest	£ 72	£ 87
Misc	£ 224	£ 221
Total	£14104	£8813

Expenditure

Parish Offer	£6643	£6643
Maintenance	£ 853	£ 943
Insurance	£ 933	£ 879
Donations	£1355	£ 549
Expenses – clergy	£ 265	£ 323
Energy	£ 344	£ 863
Other	£ 93	£ 913
Total	£10486	£11113

Bank Balance and Investments at year end

Bank balance	£8569	£5021
Investments	£11604	£11535

Two years of results have been shown as income and expenditure can vary significantly from year to year – overall balances have remained at about £19k for the last five years.